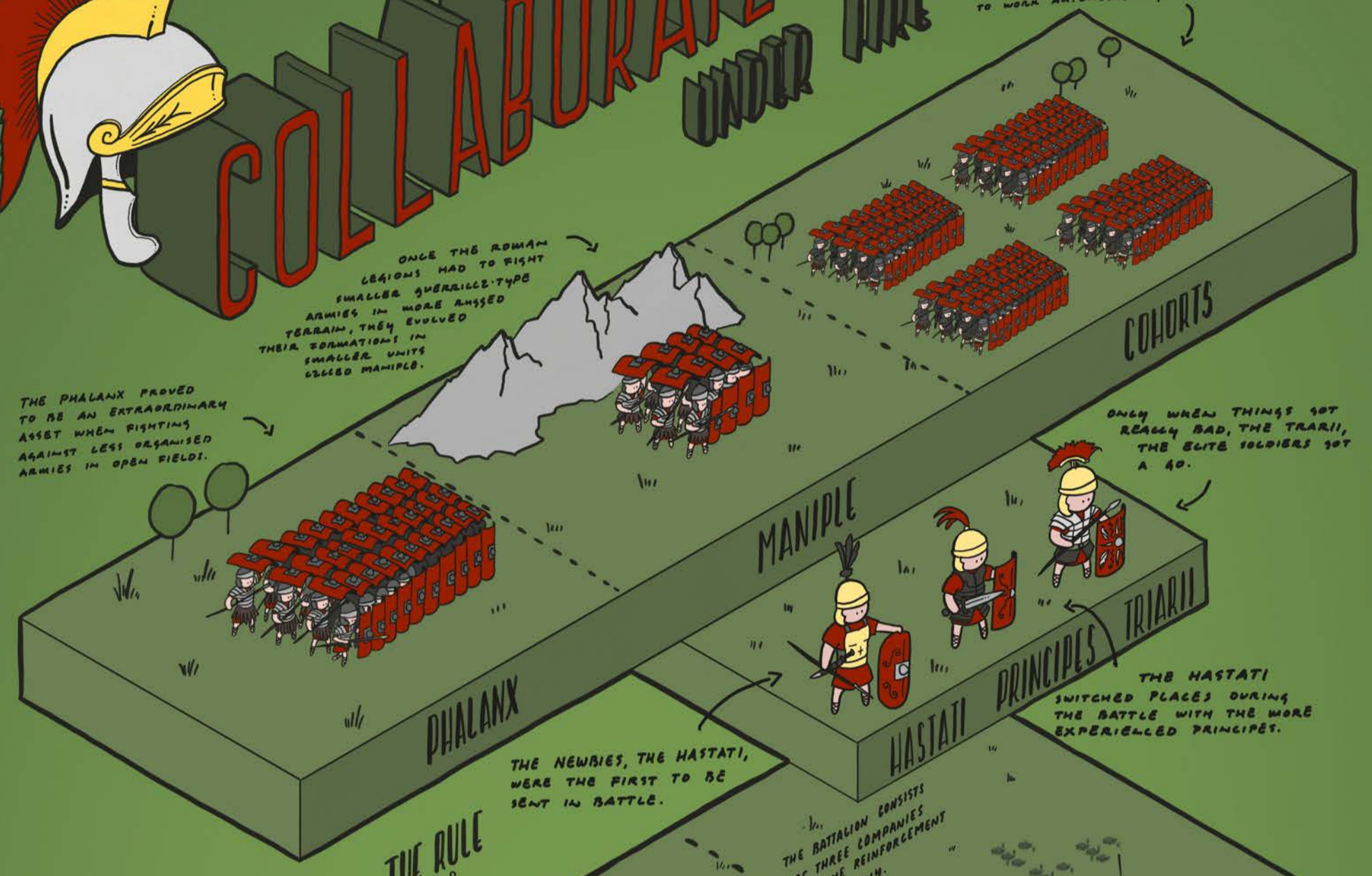




WIN WITH COLLABORATE & LEAD

WHEN THE LEGIONS WERE INCREASINGLY FIGHTING IN REMOTE REGIONS, THEY ADOPTED THE COHORT SYSTEM, THAT ALLOWED DEPLOYED TROOPS TO WORK AUTONOMOUSLY.

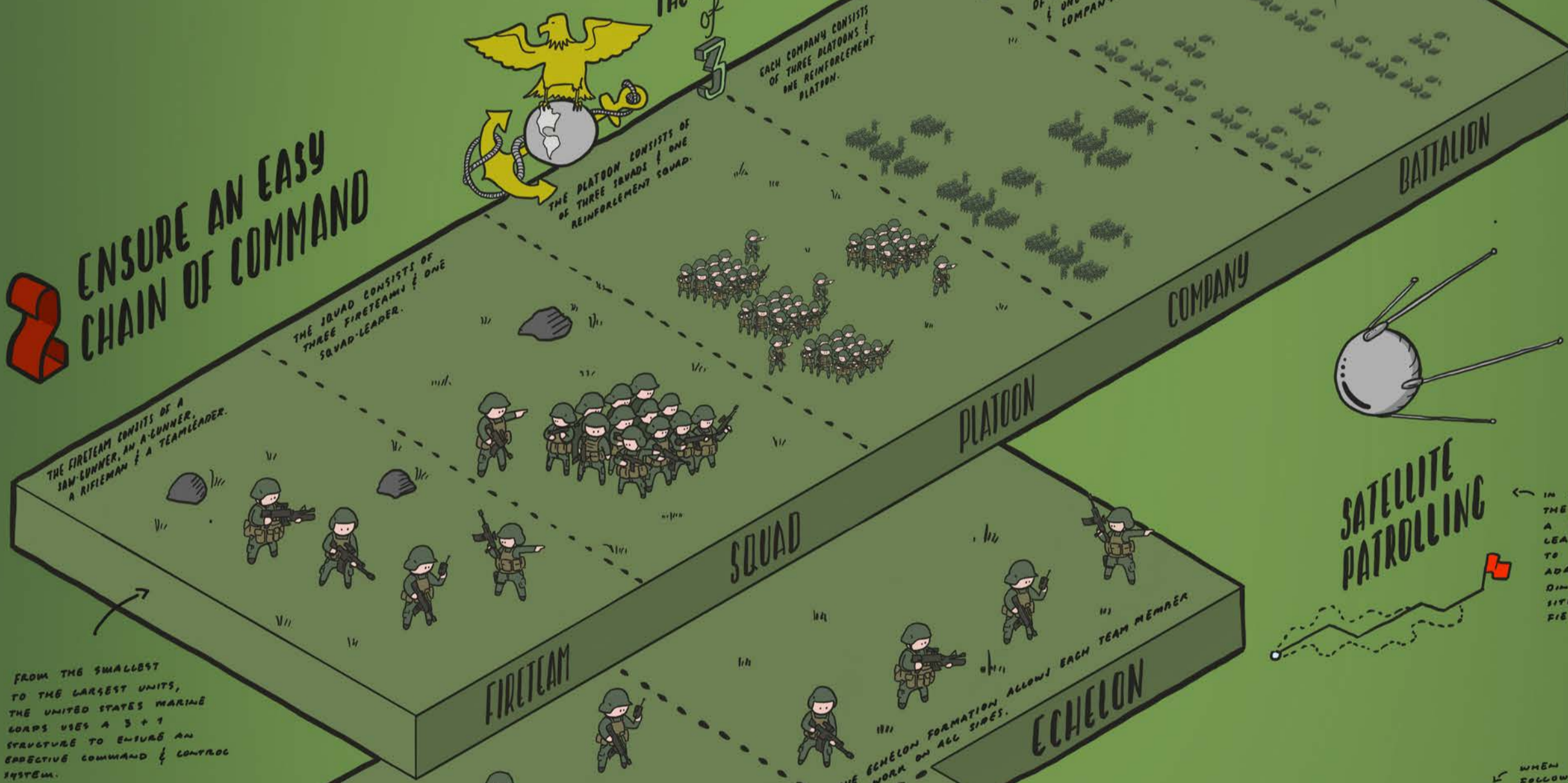
1 ADAPT TO THE SITUATION



FINANCIAL QUESTIONS

- DO YOU HAVE THE RIGHT FORMATION TO ADDRESS YOUR MARKET COMPETITION?
- WHO DO YOU SEND IN FIRST? THE NEWBIES?
- HOW DO YOU DEVELOP THE TALENTS? HOW DO YOU PREVENT CASUALTIES (BY BURNOUTS & ROBERTS)?

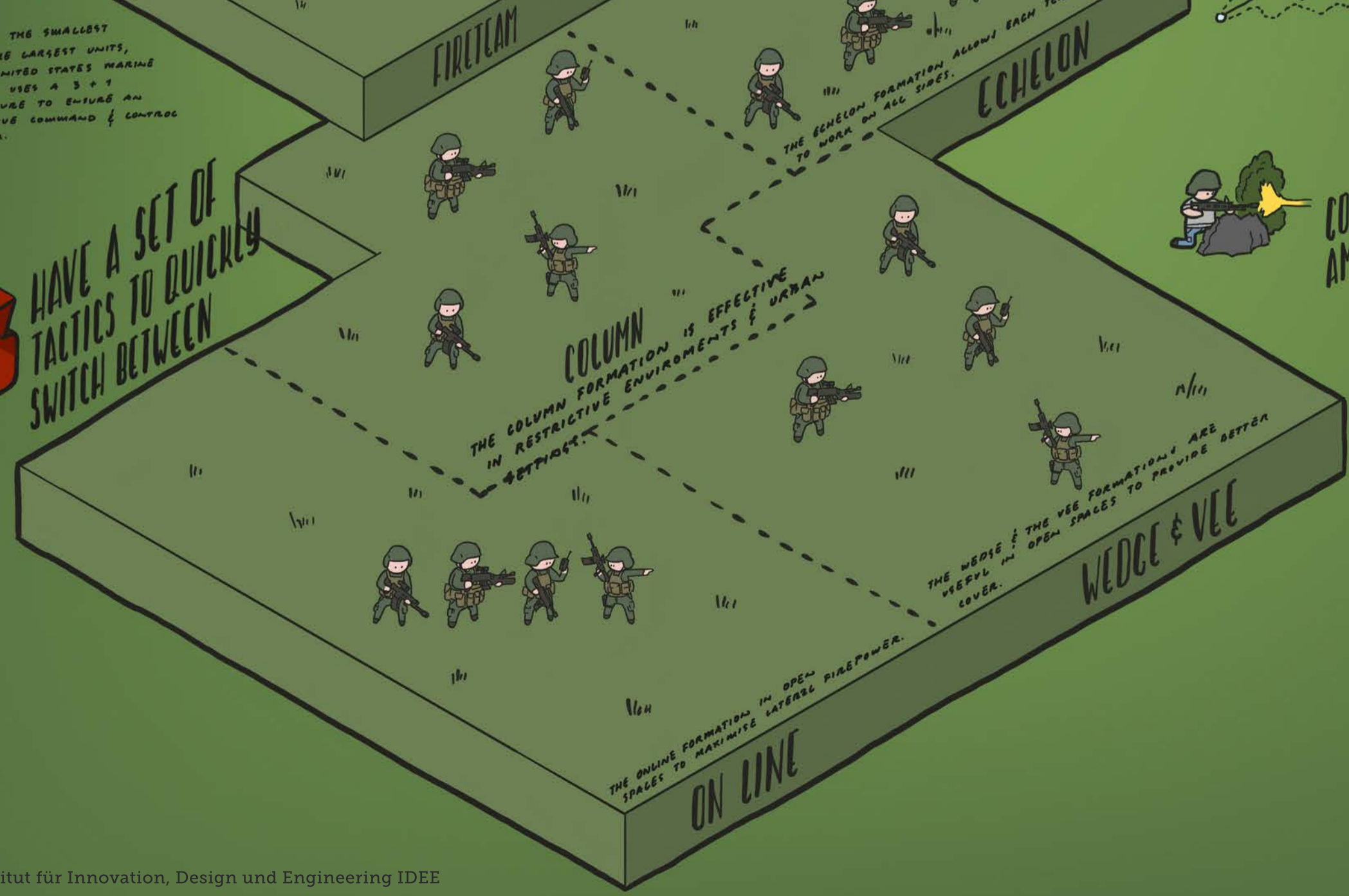
2 ENSURE AN EASY CHAIN OF COMMAND



FINANCIAL QUESTIONS

- WHAT IS THE IDEAL SIZE FOR YOUR UNITS?
- WHO DO YOU PUT IN CHARGE?
- HOW DO YOU ENSURE DETACHMENT, FOCUS & REINFORCEMENT?

3 HAVE A SET OF TACTICS TO QUICKLY SWITCH BETWEEN



SATELLITE PATROLLING

IN SATELLITE PATROLLING THE SQUAD LEADER SETS A STANDARD ROUTE, BUT LEAVES THE FINAL DECISION TO THE TEAM LEADER TO ADAPT THEIR ROUTE ACCORDING TO THE SPECIFIC SITUATION ON THE BATTLEFIELD.

COUNTER AMBUSH

- WHEN AMBUSHED THE UNIT SHOULD FOLLOW THIS PROCEDURE TO SURVIVE:
- COVER & RETURN FIRE
 - ASSESS WHETHER THE AMBUSH IS NEAR OR FAR.
 - WHEN NEAR: PICK THE NEAREST POINT & ATTACK THROUGH THE OBJECTIVE.
 - WHEN FAR: SET OUT ON THE LINE OF SIGHT & CONSOLIDATE

FINANCIAL QUESTIONS

- HOW WELL-TRAINED ARE YOUR UNITS? CAN THEY ADAPT SWIFTLY TO CHANGING CHALLENGES?
- HOW DO YOU ENSURE THE RIGHT BALANCE BETWEEN DISPERSION & CONCENTRATION?
- HOW DO YOU SECURE A CLEAR COMMAND & CONTROL STRUCTURE IN A FAST-MOVING, CHAOTIC ENVIRONMENT?